

Mannheim University of Applied Sciences

Prof. Dr. Marion Baldus
Faculty of Social Work
Pedagogy and Inclusive Education





Introduction of myself ...



**Prof. Dr. Marion Baldus
Pedagogy and Inclusive
Education**

**Symposium on
Inclusive Education 2011**

copyright@lebenshilfe- mannheim



... and my institution



Logo of Faculty of Social Work

Project „QuadrArt“, Angelika Linz
copyright@faculty_of_social_work



**Front Entrance of Faculty of Social Work,
University of Applied Sciences Mannheim**



Mannheim: In the middle of Europe, next to Heidelberg and close to Frankfurt



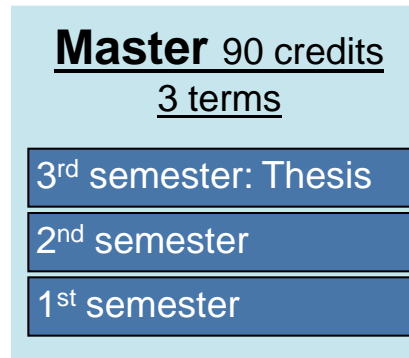
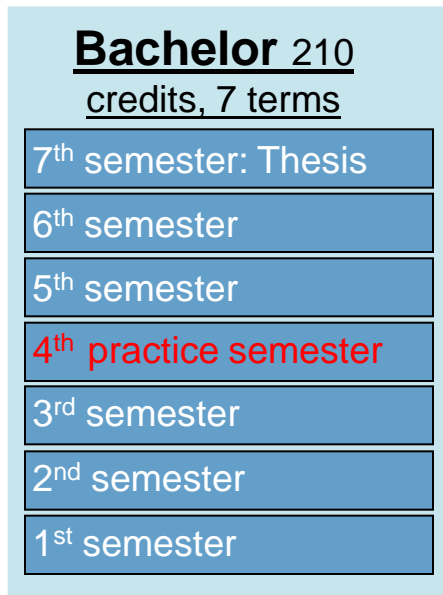


Degree	Institution
Bachelor of Arts	<ul style="list-style-type: none"> ▪ University of Applied Sciences ▪ University
Master of Arts	<ul style="list-style-type: none"> ▪ University of Applied Sciences ▪ University
Doctor of Philosophy	<ul style="list-style-type: none"> ▪ University of Applied Sciences in Cooperation with a University (new!) ▪ University

The status and income of social workers is below the income of psychologists, teachers, engineers etc. and higher than the status and income of nurses, educators, occupational therapists (Friesenhahn 2004: 90).



Typical Study Structure of Social Work Qualification Process (in Baden-Württemberg)



Cooperative Doctoral Studies
in cooperation with Universities, mainly Frankfurt University

⇒ **7 + 3 model in Baden-Württemberg**

winter term: **October - February**

summer term: **March – July**

⇒ **6 + 4 model in other Federal States**



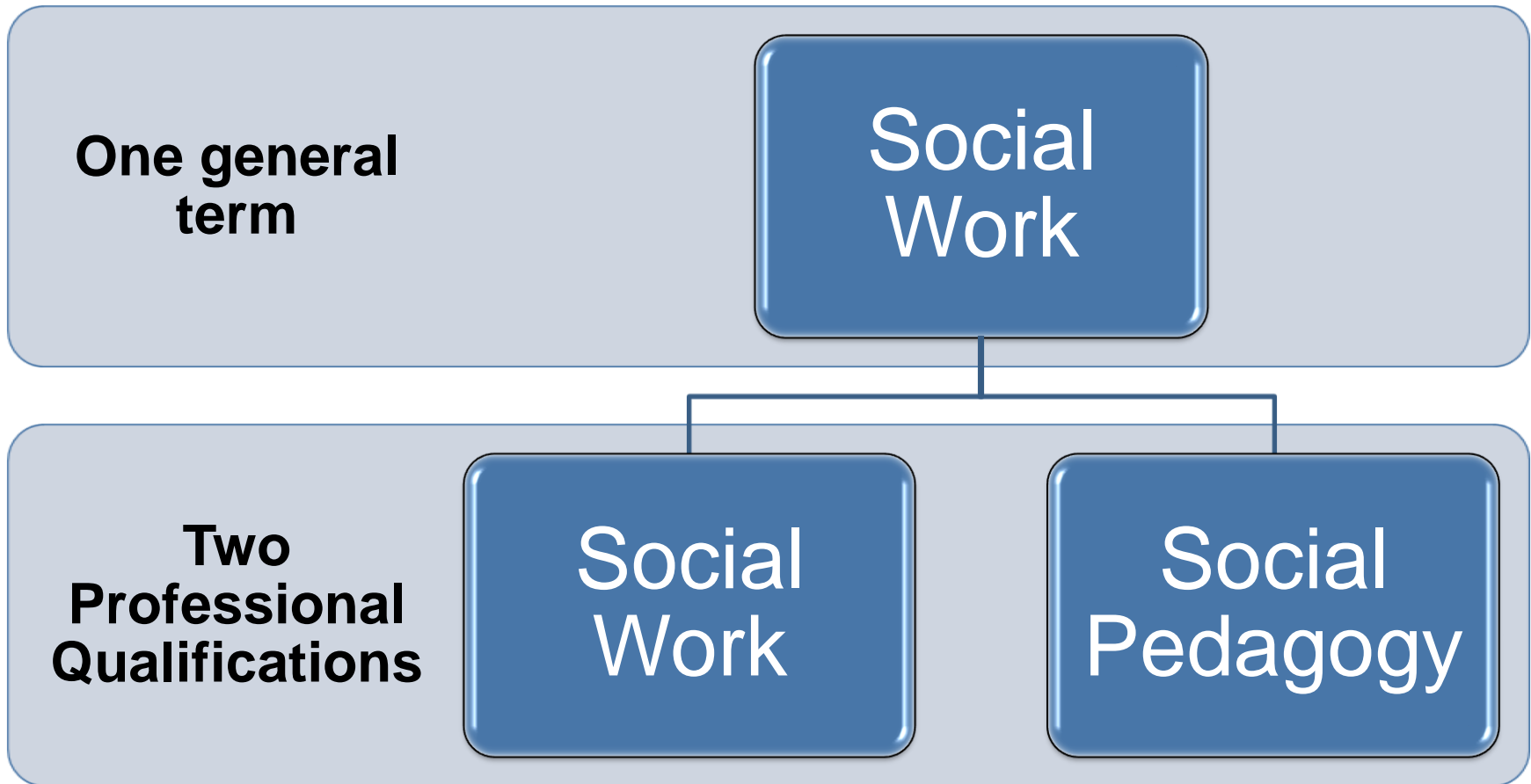
Modules

- Theories and Practice of Social Work:
- **Human Sciences:**
- **Law:**
- **History and Ethics of Social Work:**
- **Social Policy and Social Structure:**
- **Media Education:**
- **Management:**
- **Social Psychiatry:**
- **Etc.**

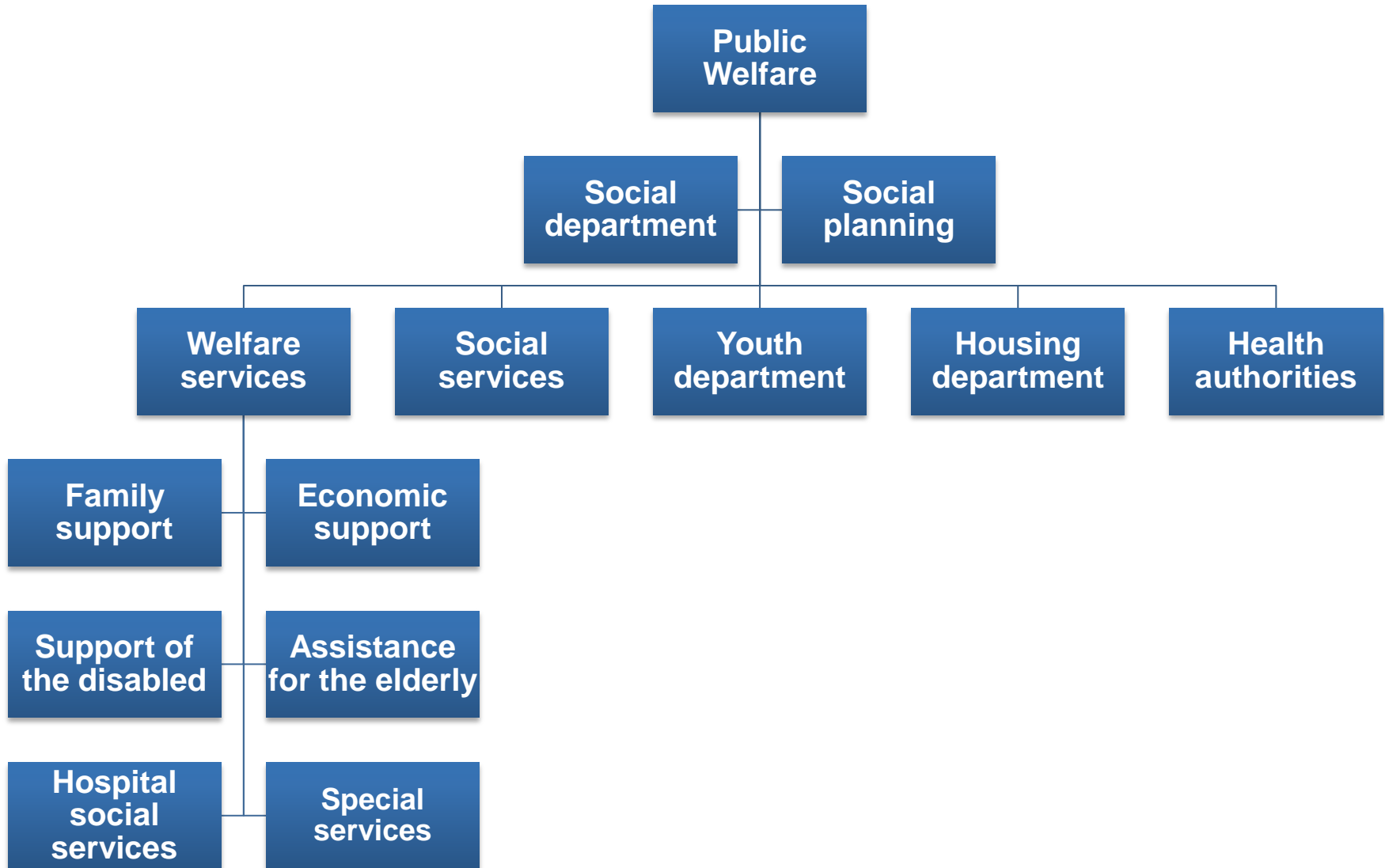
Examples

- **Key Competences**
- **Counseling, Group Work**
- **Pedagogy, Psychology**
- **Sociology, Neuro Sciences**
- **Law and Social Work, Social Security**
- **Youth Crime, Court Assistance**
- **Ethics, History, Thanatology**
- **Modern Society Systems**
- **Visual Media, Cultural Analysis**
- **Entrepreneurship, Non-Profit-Managem.**
- **Mental Health, Psychic Illnesses**

Terminology „Social Work“



Fields in which Social Workers tend to operate





Organisations and Fields of Social Work



NGO Welfare



AWO

Workers Welfare Association

Diakonie

Soc. Service Agency of the Evangelical Church

Caritas

German Caritas Association

DPWV

German Non-Denominational Welfare Association

Deutsches Rotes Kreuz

German Red Cross

ZWST

Central Welfare of the Jews in Germany

- Child protection
- Educational assistance
- Social work in schools
- Family counseling
- Prevention
- Sexual pedagogy

- Disadvantaged persons
- Homeless people
- Addiction
- Chronic illness
- Persons with disabilities
- Elderly people

- Clinical social work
- Social work in companies
- Migration services
- Family planning
- Self help groups
- Civic engagement
- etc....



Thank you for your attention !



Prof. Dr. Marion Baldus
m.baldus@hs-mannheim.de